



# V&P/DEUTZ

(VP/DEUTZ) GENSET

10-450KW

## ENGINE

DEUTZ engine multi-cylinders, four-stroke, direct injection, water-cooled or air-cooled, naturally aspirated or turbocharged, mechanical or electronic governor, speed 1500rpm/1800rpm/3000rpm diesel fuelled for industrial application.

## ALTERNATOR

Stamford or Marathon alternator, rotating, brushless, single bearing, or self-exciting self-regulating, class H insulation, three phase four wire, 0.8 P.F lag, AVR module with +/-1% static volt regulation.

## CONTROL SYSTEM

Local panel with special designed V&P controller c/w manual/remote start and stop. It incorporates basic fault warning and shutdown protection features, LCD/LED display of engine running parameters and status. Other functions like excitation control and remote monitoring can be supplied as option.

## SKID

Engine, alternator radiator and control panel are mounted on a fabricated base, all welded steel construction c/w lifting hook

## PROTECTION SYSTEM

Standard protection functions as follows:

- High water temperature warning and shutdown
- Low oil pressure warning and shutdown
- Over crank warning and lockout
- Over speed warning and shutdown
- Under speed warning and shutdown
- Fail to start warning
- Over-Current protection(optional)
- Over-Voltage protection(optional)

## FILTERING SYSTEM

Dry element air filter with spin-on paper element type, fuel and lub oil filter

## STARTING SYSTEM

12/24V DC starting system engine driven battery charging dynamo.

## EXHAUST SYSTEM

Flexible exhaust pipe and industrial silencer are supplied as optional

## WARRANTY

1 year standard warranty

## RADIATOR

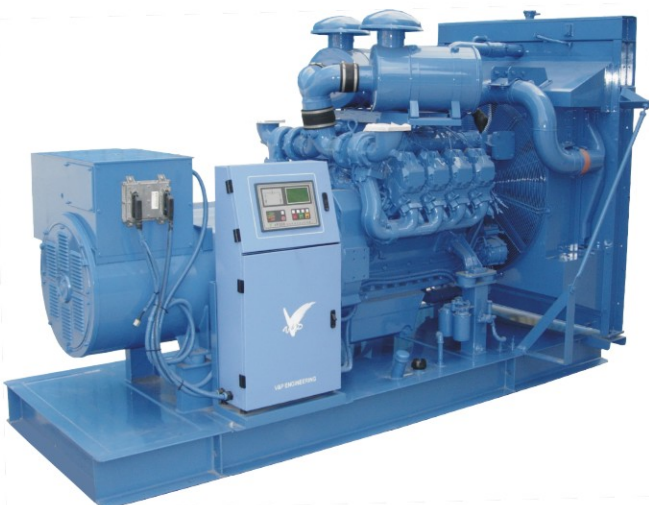
Set-mounted radiator with engine driven cooling fan and water pump, radiator mounted on the skid, suitable for 40°C tropical environment application (only applicable for water-cooled engine)

## ACCESSORIES(OPTIONAL)

- Acoustic canopy
- Trailer for mobile genset
- Remote communication
- Outgoing breaker
- Heat exchanger
- remote radiator
- Battery float charger
- Day tank or base tank
- Water heater
- Anti-condensation heater
- Fuel water separator
- Remote annunciator
- Ni-Cad batteries
- Paralleling system
- Changeover system

## BATTERY

12/24V acidic batteries





# V&P/DEUTZ

(VP/DEUTZ) GENSET

(230/400 V 1500 RPM 50Hz)

Cooling system	VP/DEUTZ		Rated Power (KW)		Genset Size & Weight			
	Genset Model	Engine Model	Prime	Standby	Length (mm)	Width (mm)	High (mm)	Weight (Kg)
Air cooled	VPD10A	F2L2011	9	10	1300	750	1000	520
	VPD16A	F3L2011	15	16.5	1300	750	1000	600
	VPD25A	F4L2011	23	25.5	1645	750	1000	710
	VPD23A	F3L912	22	23	1460	750	1100	800
	VPD33A	BF4L2011	29.5	33	1690	750	1000	815
	VPD31A	F4L912	29.5	31.5	1690	800	1100	880
	VPD49A	F6L912	46	49	2200	800	1100	1100
	VPD88A	BF6L913	80	88	2200	800	1200	1200
	VPD112A	BF6L913C	104	112	2550	800	1200	1350
VPD118A	BF6L914C	108	118	2550	800	1300	1370	
Water cooled	VPD52	BF4M2012G2	47.5	52	1730	1000	1500	1180
	VPD70	BF4M2012C	60	70	1730	1000	1500	1250
	VPD76	BF4M1013E	70	76	2250	1000	1500	1400
	VPD92	BF4M1013EC	83	92	2250	1000	1500	1500
	VPD116	BF6M1013E	106	116	2600	1000	1500	1650
	VPD135	BF6M1013EC	125	135	2800	1000	1500	1720
	VPD165	BF6M1013FCG2	150	165	2800	1000	1500	1800
	VPD220	BF6M1015	200	220	2900	1200	2100	2100
	VPD310	BF6M1015C	280	310	3000	1200	2100	2330
	VPD330	BF6M1015CP	300	330	3000	1200	2100	2650
	VPD410	BF8M1015C	370	410	3200	1400	2100	2900
VPD450	BF8M1015CP	410	450	3200	1400	2100	3000	

※Design according to:BS5514/ISO8528(KW×1.25=KVA)

Specification may change without notice



● Singapore ● HongKong ● Shenzhen ● Shanghai ● Beijing ●

Authorised Dealer :



V&P Engineering(China)LTD.